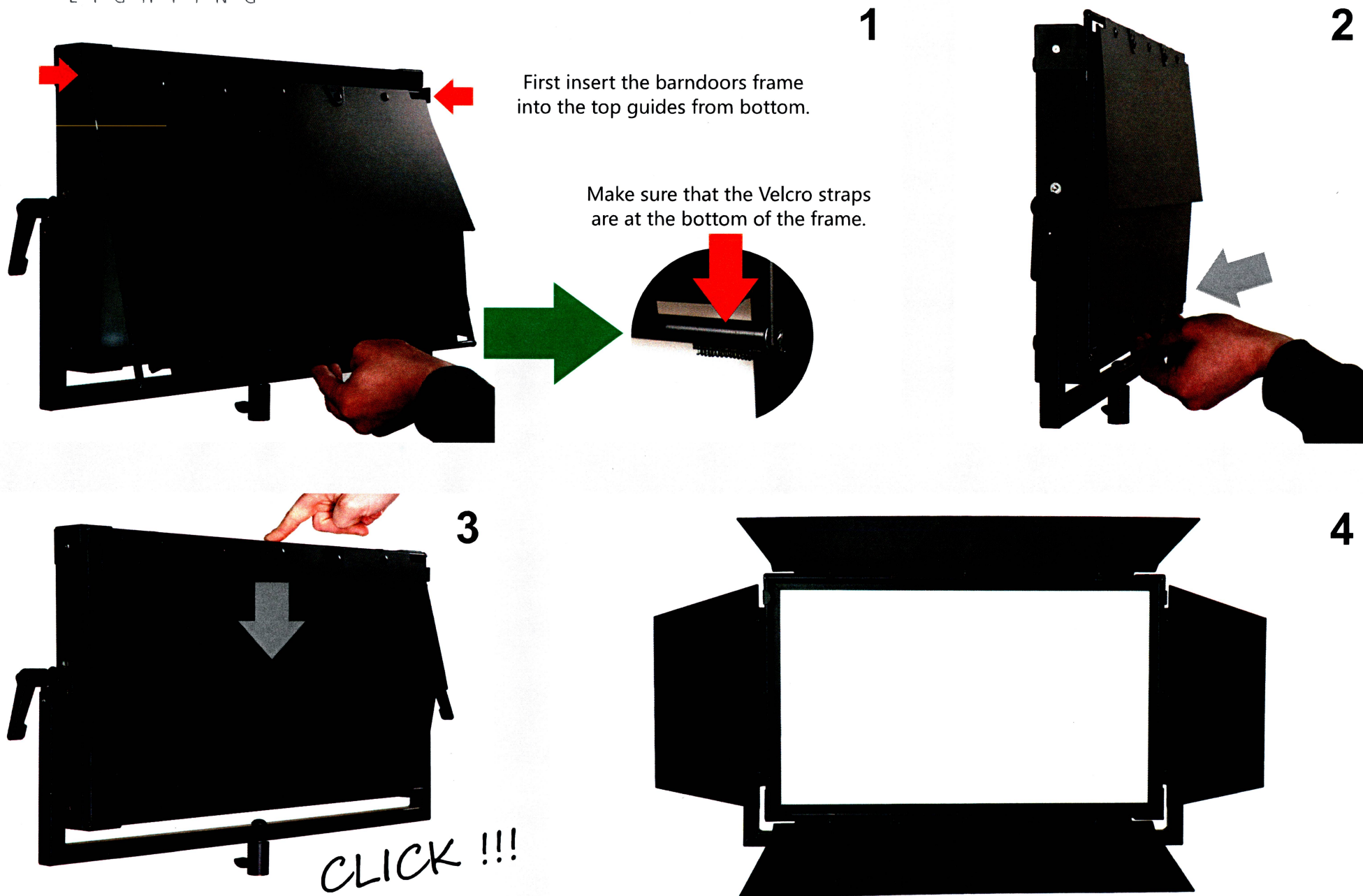
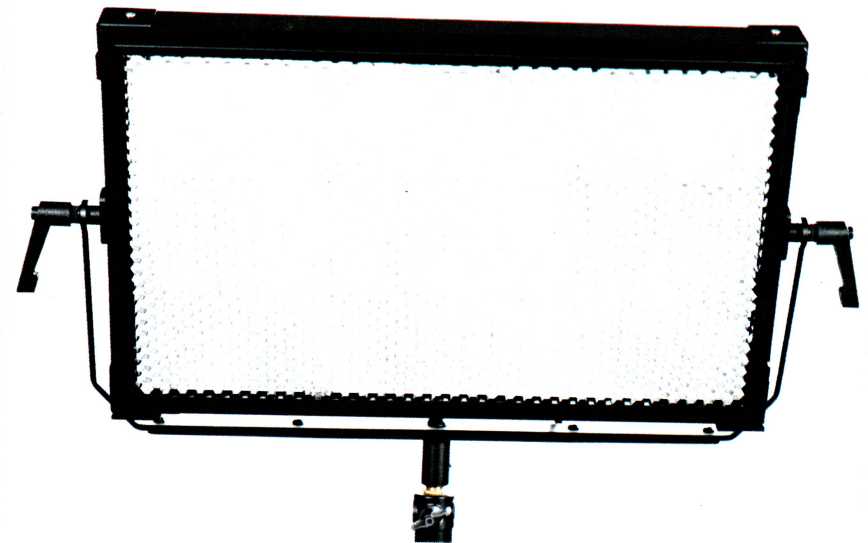
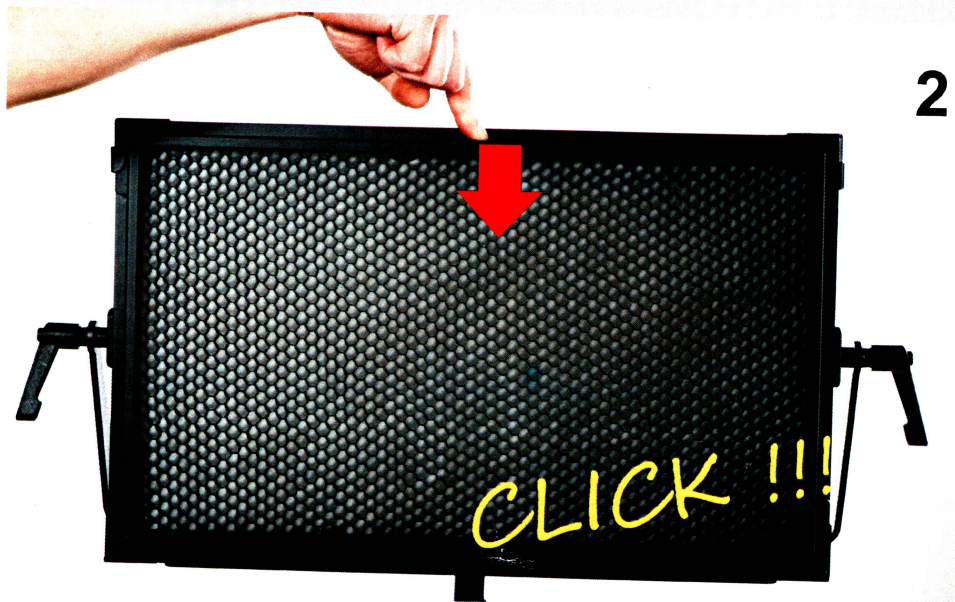
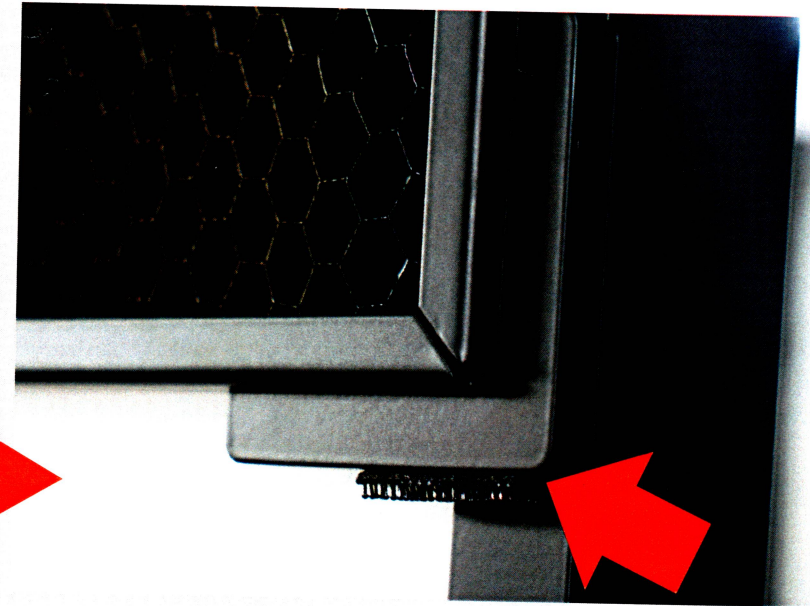
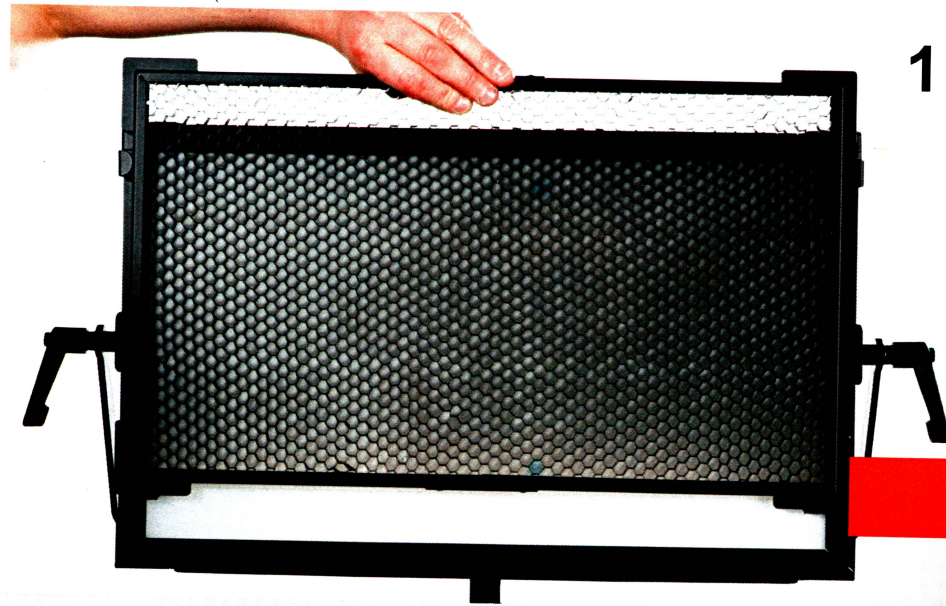


# D4A D8A Barndoors Assembly Instruction





# D4A D8A Grid Assembly Instruction







## Instruction of use

The D8 MK2 Type R+ panel is designed for use in spectrum quality sensitive applications, like digitizing of Cultural Heritage or digital reproduction of works of art. The fixture emits strong, diffused daylight with full and even spectrum.

Turning the dial (1) changes the value of dimmer. The minimum dimmer value is limited to 50% of the maximum power to maintain the best spectral characteristics of the LEDs.

The encoder knob has a dynamic control of precision. Slowly turning the knob changes the adjustable parameter by one step. Faster turning speeds up the regulation, with the number of regulation steps per knob step being dependent on the turning speed. Pressing the encoder knob puts the controller into sleep mode or restores from sleep mode.

To detach the AC adapter disconnect the Velcro straps and tear off the AC Adapter (7) from the MK2 AC adapter plate (6).

Battery operation needs replacing the MK2 AC power plate to the MK2 battery plate (not included). To do it see the manual of MK2 battery plate.

To operate DMX, follow the attached DMX manual.

### Important Notice

For best spectral characteristics and to avoid a thermal drift, the luminaire should be preheated for approximately half an hour at 100% power.

**AKURAT**  
LIGHTING

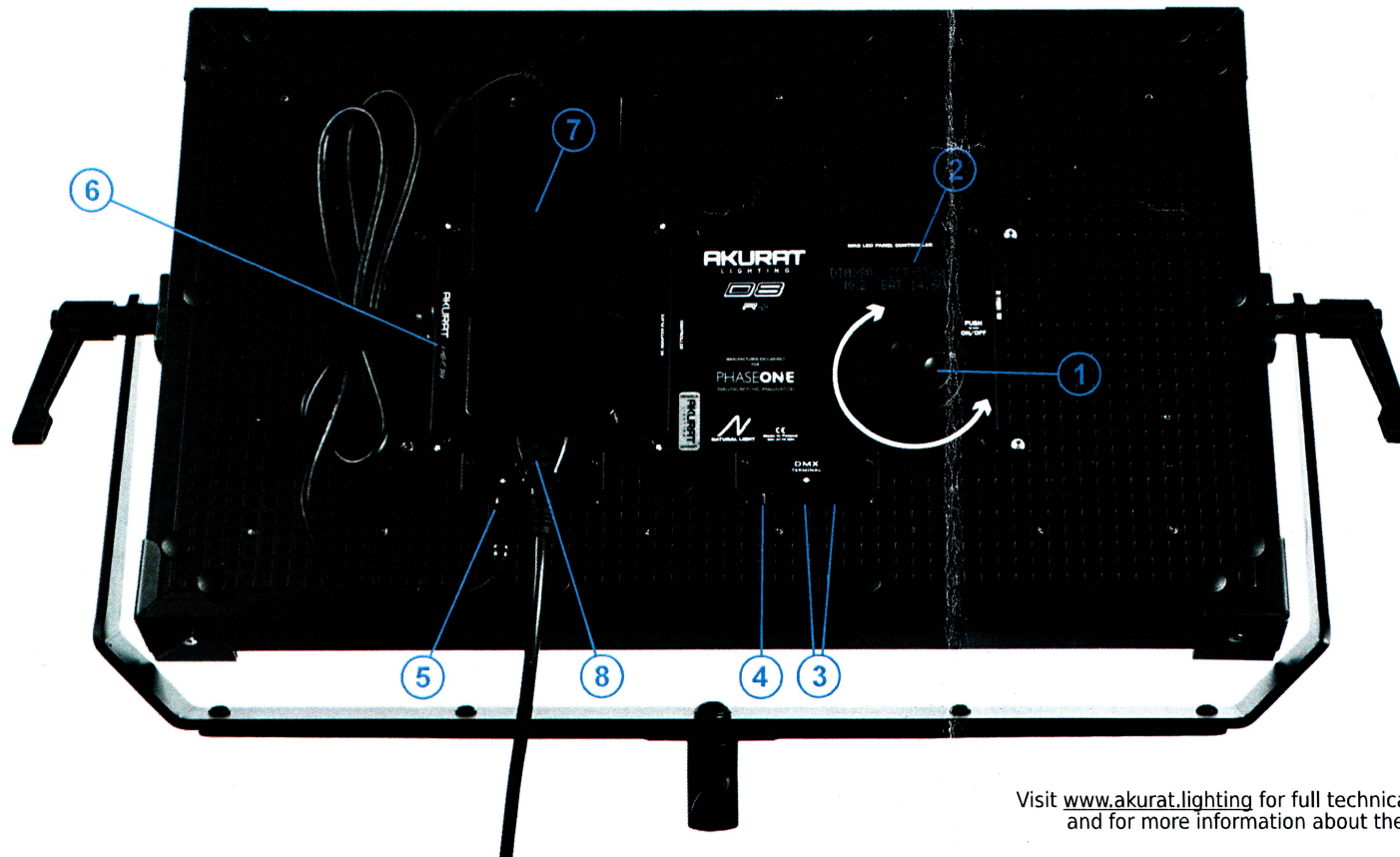
**D8**  
MK2

**R+**

**N**  
NATURAL LIGHT

### Control Components of D8 MK2 R+ LED Panel

- 1 - Encoder knob
- 2 - Display
- 3 - DMX RJ45 in/out
- 4 - Wireless DMX USB input
- 5 - DC power input
- 6 - AC adapter plate
- 7 - AC adapter
- 8 - AC power inlet



Visit [www.akurat.lighting](http://www.akurat.lighting) for full technical specification and for more information about the product.

MANUFACTURED EXCLUSIVELY FOR  
**PHASE ONE**  
IMAGING BEYOND IMAGINATION

## Warranty Card

### • Warranty and Service

The warranty period lasts 36 months from the date of sale. The warranty includes free removal of defects revealed during the operation under the conditions specified in this warranty card. To take advantage of the warranty, it is necessary that the following conditions:

- installation and operation of the equipment should be in accordance with this instruction
- seal on the housing shall not be infringed
- there aren't any corrections and amendments in the warranty card or the sale proofment

#### WARRANTY DOES NOT COVER:

- damages caused by improper transportation or storage
- damages resulting from improper installation or operation, including mechanical damages
- damages resulting from handling inside the unit, construction changes, alterations and repairs to be carried out without the consent of the manufacturer

In the case of defect covered by warranty, please contact your local dealer or send the unit at own expense to the manufacturer, together with: this warranty card or copy of proof of sale, the description of damage, the contact details, and the address to returning of repaired equipment.

An employee of the manufacturer shall make an initial review of the device. The guarantor will contact with the person who notified a defect, to take action to payable repair, in the case of defect described above events of the loss of the guarantees, or detect of damages whom the warranty does not cover.

The guarantor has the right to charge a fee for checking the equipment in the amount of 15 € plus the cost of return shipping, if there is no agreement to payable repair or in the event of unjustified complaint.

In other cases, the fault will be removed free of charge, or equipment will be replaced. The new or repaired equipment will be sent at the expense of guarantor for the applicant address within 14 days from the date of delivery for repair. The free shipment is limited to addresses within EC. In other case the cost of returning the equipment after repair will be borne by the applicant.

After the warranty expired, the guarantor will provide the payable after sales service, until stocks of spare parts for the respective model run out.

\_\_\_\_\_  
date of sale

\_\_\_\_\_  
signature and stamp

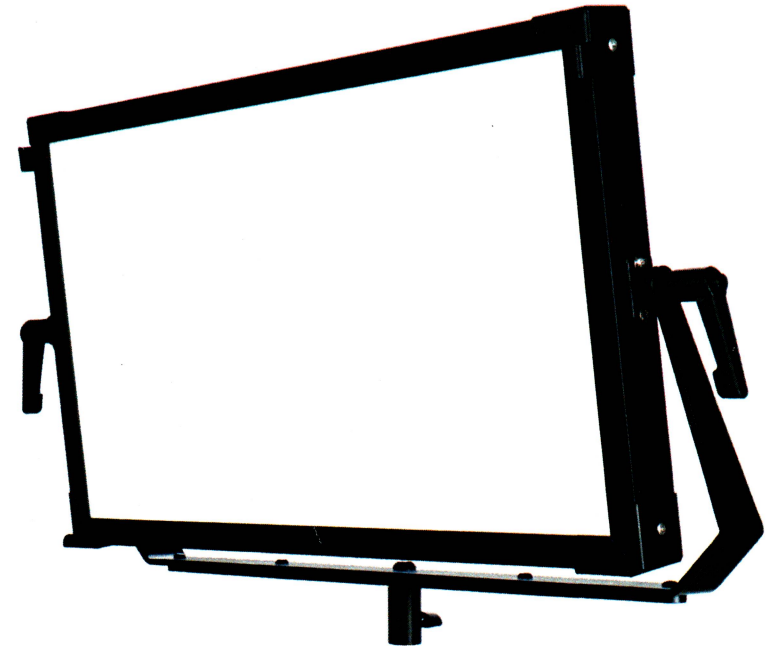
Contact details of guarantor:

**Akurat Lighting Sp. z o.o.**  
ul. Krakusa 11, 05-802 Pruszkow, Poland  
info@akurat.lighting tel. +48 22 863 64 33

  
Made in Poland

# AKURAT

L I G H T I N G



## 08

### MK2 R+

**High Quality 5500K LED Panel  
for Digitization of Cultural Heritage**

## User Manual

MANUFACTURED EXCLUSIVELY FOR

**PHASEONE**  
IMAGING BEYOND IMAGINATION



## **Akurat MK2 LED Panels** **DMX 512 Decoder User Guide**

Two RJ45 sockets located on the DMX terminal are used to connect a DMX signal. They enable the creation of a DMX line structure using standard patch cords. An USB input on the DMX terminal is used to connect the Akurat W-DMX receiver. The fixture switches to the DMX mode automatically after the DMX signal is connected.

Akurat MK2 bi fixtures use two neighbouring DMX control channels. The first channel controls a dimmer and the following channel controls a CCT. Mono fixtures use only one DMX channel.

Current DMX address of the fixture interpreted by controller as the first control channel (dimmer) is displayed after connecting the DMX signal.

To change the address press the encoder knob. When a "SET" caption appears on the display turn the encoder knob to change the DMX address, then wait about 2 seconds. New address is memorized automatically and the controller start to read a data from new address. The "READ" message on the display means that the luminaire controller is reading data from the DMX signal.

All MK2 luminaires are factory set on DMX address 001.

### Notes

1. If the memorized DMX address is not transmitted in the DMX signal, the decoder does not go to the readout mode but remains in the "SET" mode.
2. At the address setting mode (SET) the decoder does not decode the DMX signal.
3. Changing the fixture's DMX address is possible only after connecting the DMX signal.
4. Our offer includes solutions that enable DMX signal connection also with XLR plugs.

We remain at your disposal in case of any questions.



